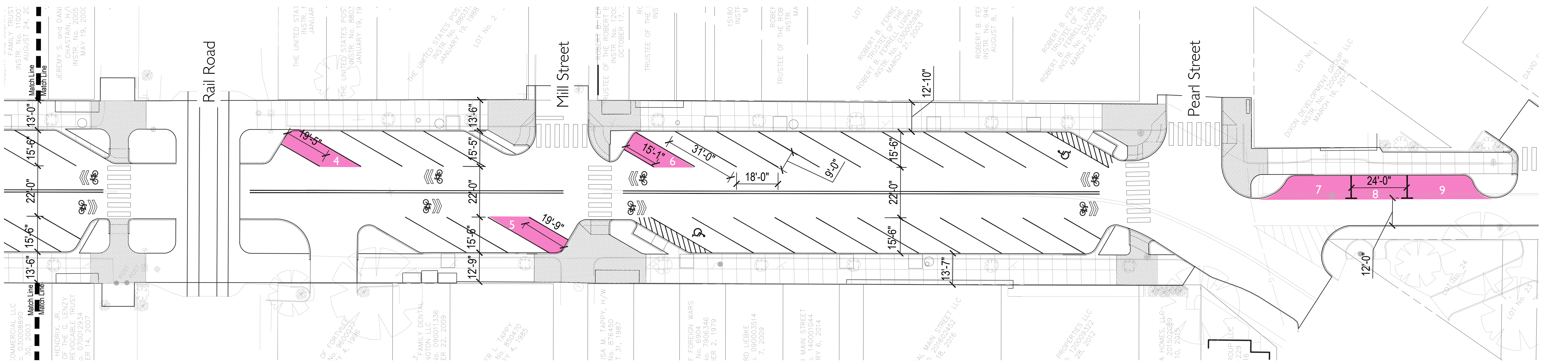


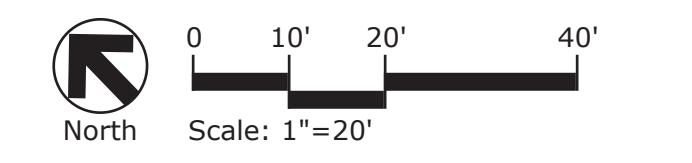
Northern Half



Southern Half

Currently Existing Parking Spaces: 86
 Previously Proposed Parking Spaces: 67
 Revised Proposed Parking Spaces: 76

Additional Parking Spaces Added



FORTVILLE MAIN STREET - 30 Degree Parking Option - With Parallel Parking South of Pearl Street

October 31, 2018

